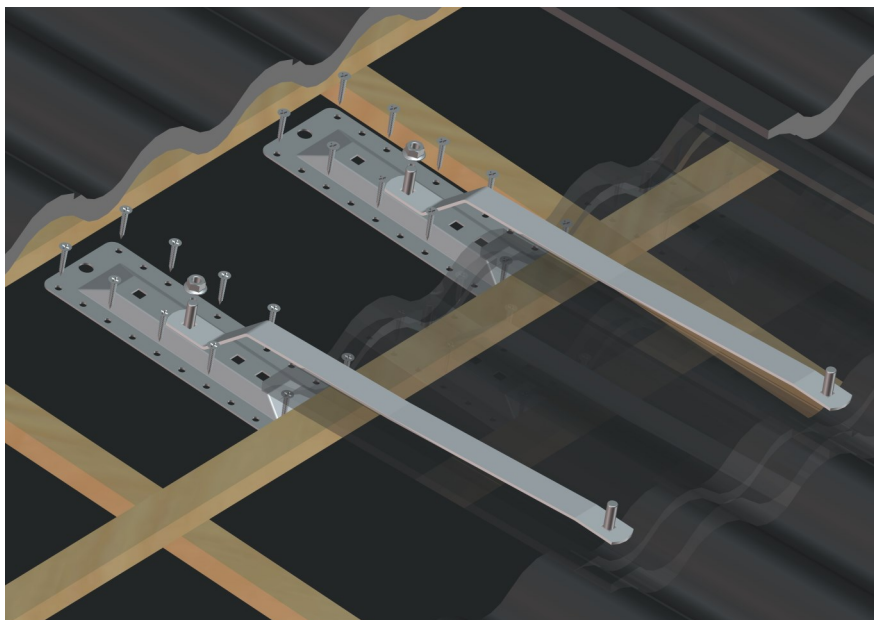
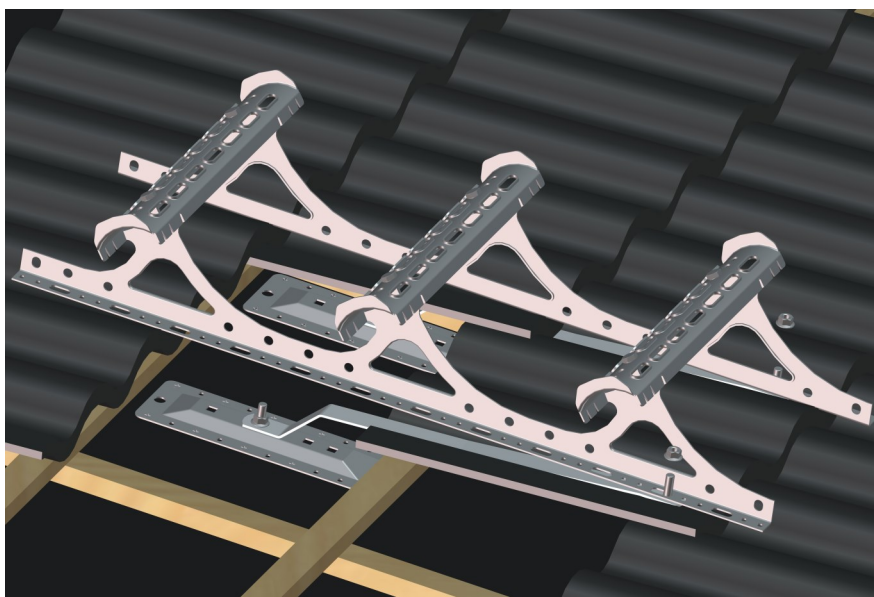


Adjust the width of the ladder so it fits in the tile valley (c/c 300, 360 or 400 mm). Screw the tread surfaces to the sidepieces. The tread joints are assembled with an overlap. Use M10x20 bolts and M10 flange nuts.



Attach the fixing iron to the base plate. Place the base plate under the batten and adjust so the fixing iron is in direct contact with the roofing tiles. Screw the base plate firmly into place using 10 6x35 wood screws. **NOTE!** place 2 screws at each end and distribute the other 6 screws evenly across the base plate. **Use a screwdriver with a deep stopper base so the screw doesn't go round and lose its grip in the wood.**



Fixing the top and bottom with a maximum of 5 m between the fixings. Screw the ladder to the fixing iron using M10x30 coach bolt and M10 flange nut.